

Solenoid operated valves direct acting spool type
4-way 3-position
Common cavity, Size 08

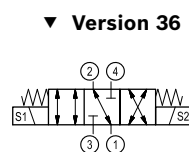
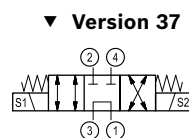
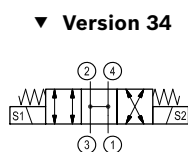
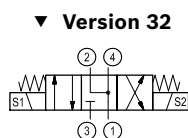
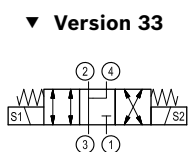
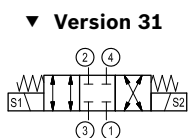
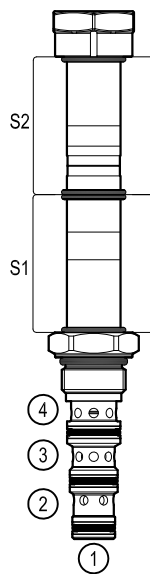
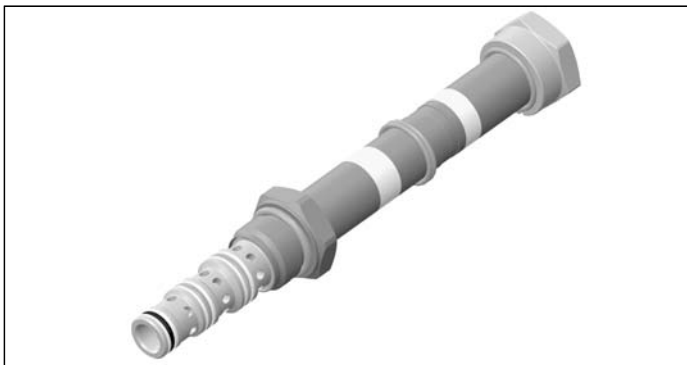
VED-16-08A-43

OD.14 - X - 58 - Y - Z - 00

RE 18324-10

Edition: 03.2020

Replaces: 06.2019



Technical data

General	
Weight	0.14 kg (0.31 lbs)
Installation orientation	Unrestricted
Storage ambient temperature range	-40 to 100 °C (-40 to 212 °F)
Operating ambient temperature range	-30 to 90 °C (-22 to 194 °F)
Salt spray test to DIN EN ISO 9227:2017-07	500h
Hydraulic	
Max. operating pressure	up to 280 bar (4060 psi)
Max. admitted pressure port 1	50 bar (725 psi)
Max. flow	up to 15 l/min (4 gpm)
Max. internal leakage at 230 bar	40 cm ³ /min. (2.4 cu.in./min.)
Fatigue cycle life	* 1 million cycles at 250 bar
Fluid temperature range	-20 to 80 °C (-4 to 176 °F)
Fluids: Mineral-based or synthetics with lubricating properties at viscosities of 20 to 380 mm ² /s (cSt)	
Installation torque	34 - 39 Nm (25 - 29 ft-lbs)
Recommended degree of fluid contamination	Nominal value max. 10 µm (NAS 8) ISO 4406 19/17/14
MTTFd	* 150 years see RE 18350-51
Cavity	CA-08A-4N see 18325-70
Seal kit for X= 31,32	code RG08A4010530100 material no. R930005582
Seal kit coil and standard cap	code RG02Z0010000100 material no. R930067869
Other technical data	See data sheet 18350-50
Electrical	
Type of voltage	DC voltage
Coil type	D36
Supply voltage	See data sheet 18325-90
Admitted voltage tolerance: -10% / +25% of nominal voltage at 60°C amb. T	
Power consumption	20 W
Type of protection	See data sheet 18325-90
Note: Coils must be ordered separately	

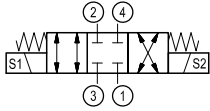
* Valid only for Y=A=Standard

Ordering code

OD.14	X	58	Y	Z	0000	*
--------------	----------	-----------	----------	----------	-------------	----------

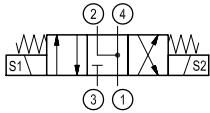
Solenoid operated valves
direct acting spool type
4-way 3-position

Series O/A to L
unchanged performances and dimensions

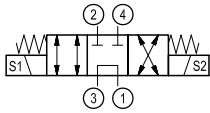


31

0 = With Buna seal
V = With Viton seal

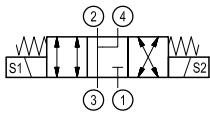


32



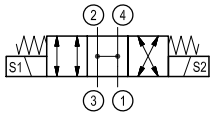
37

A = Standard
B = Push and pull manual override
C = Push and pull manual override with detent

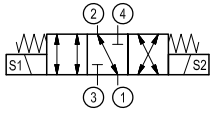


33

Common cavity: CA-08A-4N



34



36

S1 energized permits connection
between port 3-4 and 2-1.
S2 energized permits connection
between port 3-2 and 1-4

Preferred types

Type	Material number
OD143158A000000	R930063202
OD143258A000000	R930063203
OD143758A000000	R930063207
OD143158B000000	R930065237
OD143158C000000	R930066827

Type	Material number
OD143258B000000	R930066523
OD143358A000000	R930063204
OD143458A000000	R930063205
OD143658A000000	R930063206

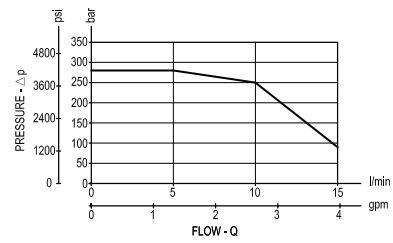
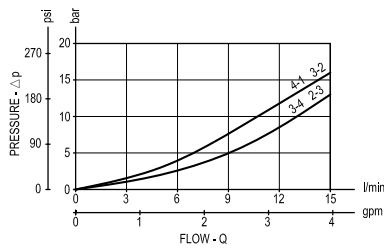
Minimum switching voltage for all versions and 100% ED	
Amb. T	Voltage required
60°C	-10% of V nominal
90°C	V nominal

Note: in case of need of performance limits
at specific different working conditions,
please consult factory.

Characteristic curves

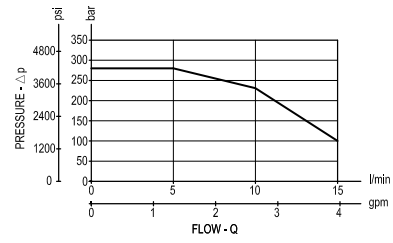
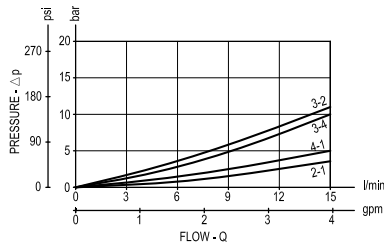
Version 31

Performance limits at 100% duty cycle at 90°C and 60°C amb. T.



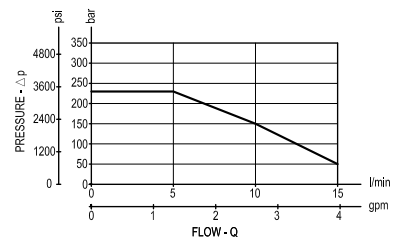
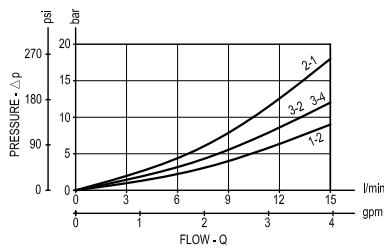
Version 32

Performance limits at 100% duty cycle at 90°C and 60°C amb. T.



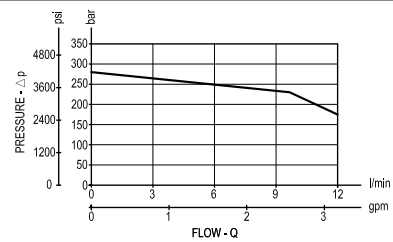
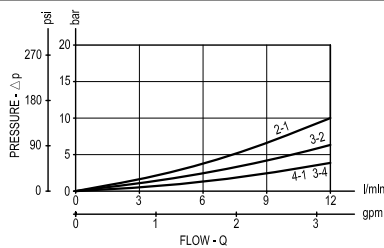
Version 37

Performance limits at 100% duty cycle at 45°C amb. T.



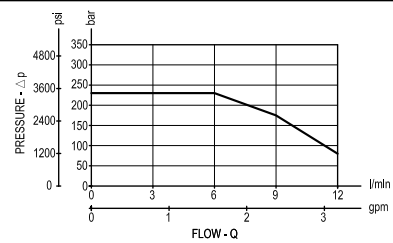
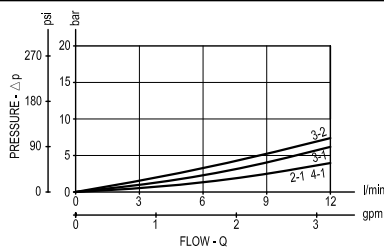
Version 33

Performance limits at 100% duty cycle at 60°C amb. T.



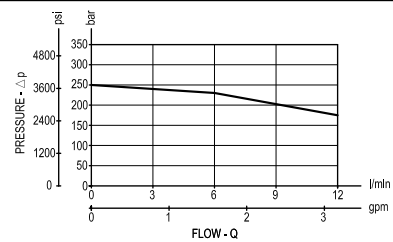
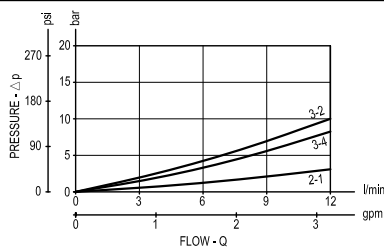
Version 34

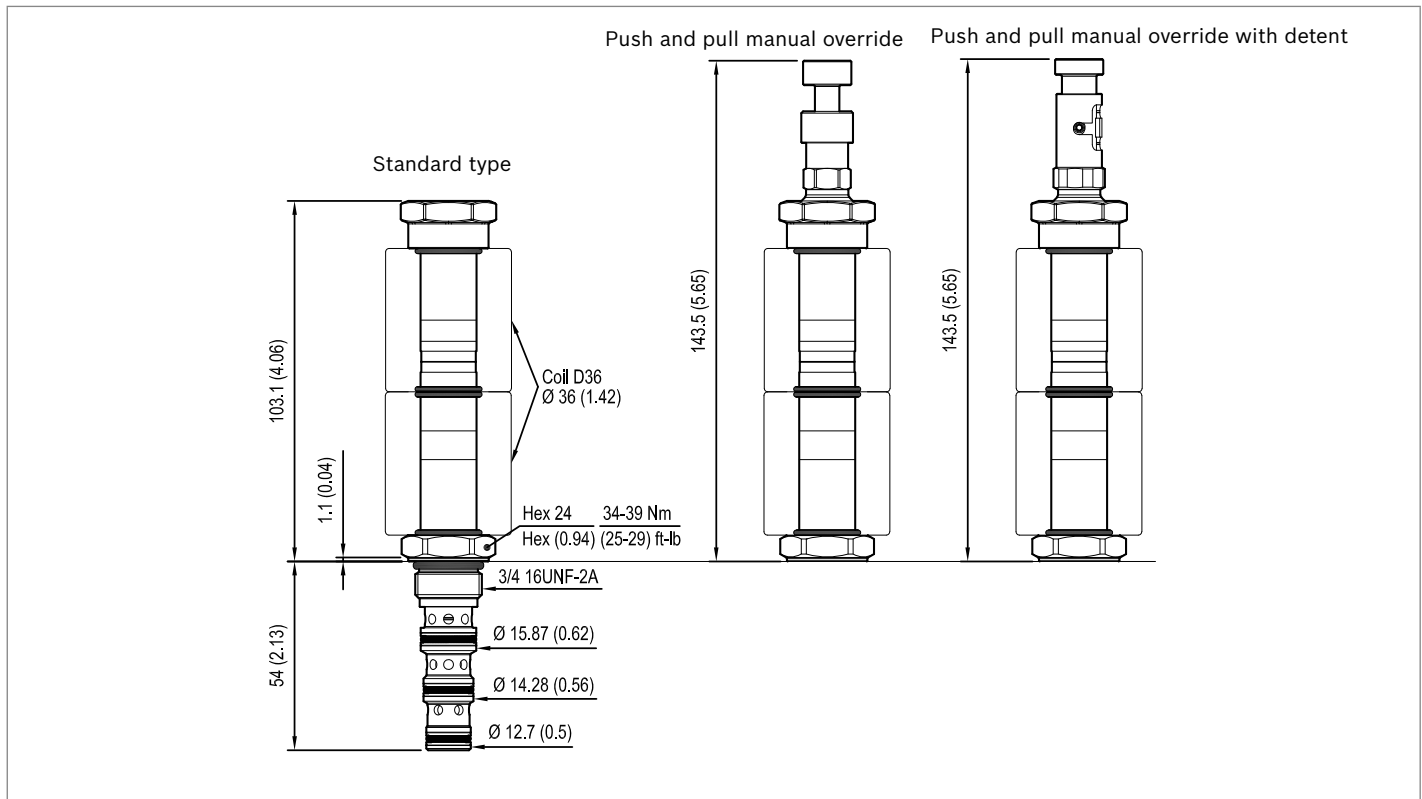
Performance limits at 100% duty cycle at 60°C amb. T.



Version 36

Performance limits at 100% duty cycle at 60°C amb. T.



Dimensions**Solenoid operated valves, direct acting
spool type 4-way 3-position****Bosch Rexroth Oil Control S.p.A.**

Via Leonardo da Vinci 5
P.O. Box no. 5
41015 Nonantola – Modena, Italy
Tel. +39 059 887 611
Fax +39 059 547 848
compact-hydraulics-cv@boschrexroth.com
www.boschrexroth.com/compacthydraulics

© This document, as well as the data, specifications and other information set forth in it, are the exclusive property of Bosch Rexroth Oil Control S.p.a.. It may not be reproduced or given to third parties without its consent. The data specified above only serve to describe the product. No statements concerning a certain condition or suitability for a certain application can be derived from our information. The information given does not release the user from the obligation of own judgment and verification. It must be remembered that our products are subject to a natural process of wear and aging. Subject to change.