

Pressure reducing and relieving,  
direct acting spool damped type  
Special cavity, CA-07A-3N

VRPR-07A-S

04.95.09 - X - 99 - Z

**RE 18318-60**

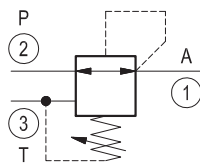
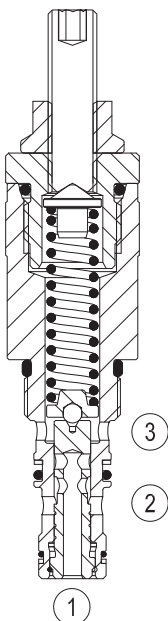
Edition: 03.2016

Replaces: 07.2012



**Description**

Initially, flow passes freely from 2 to 1. When the pressure at 1 exceeds the pressure setting, the valve acts to restrict input flow at 2. This increases the pressure drop through the valve and maintains consistent pressure at 1. The spring chamber is drained at 3 to prevent a build-up of back-pressure against the spool. Additionally, if pressure at 1 rises above the pressure setting, flow is relieved to 3 until the setting is re-attained. VRPR-07A-S is equipped with a damped type spool especially designed for demanding applications.

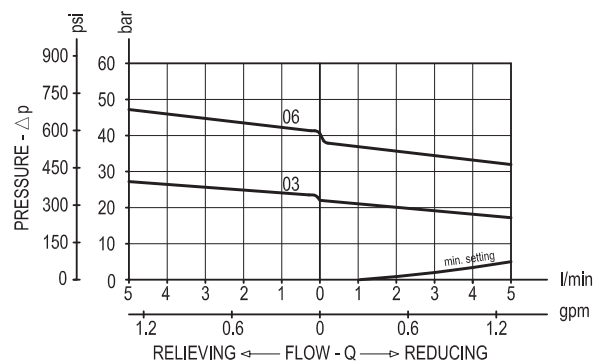


**Technical data**

Max. operating pressure port 2 (P)	420 bar (6000 psi)
Max. pressure admitted port 1 (A)	70 bar (1000 psi)
Max. flow	5 l/min (1.3 gpm)
Max. internal leakage <sup>1)</sup>	50 cm <sup>3</sup> /min. (3 cu.in./min.)
Fluid temperature range	-30 to 100 °C (-22 to 212 °F)
Installation torque	24 - 27 Nm (18 - 20 ft-lbs)
Weight	0.14 kg (0.31 lbs)
Special cavity	CA-07A-3N (see data sheet 18325-75)
Lines bodies and standard assemblies	Please refer to section "Hydraulic integrated circuit" or consult factory
Seal kit <sup>2)</sup>	Code: RG07A3010520101 material no: R930006361
Fluids	Mineral-based or synthetics with lubricating properties at viscosities of 10 to 500 mm <sup>2</sup> /s (cSt)
Recommended degree of fluid contamination	Nominal value max. 10µm (NAS 8) / ISO 4406 19/17/14
Installation position	No restrictions
Other Technical Data	See data sheet 18350-50

- 1) 1 - 3 to 80% of pressure setting
- 2) Only external seals for 10 valves

**Characteristic curve**



**Ordering code**

<b>04.95.09</b>	<b>X</b>	<b>99</b>	<b>Z</b>	<b>00</b>	<b>*</b>
-----------------	----------	-----------	----------	-----------	----------

Pressure reducing and relieving,  
direct acting spool damped type

**Adjustments**

**91** Leakproof hex. socket screw

**99** Special cavity, CA-07A-3N

Series O/A to L  
unchanged performances and dimensions

Version and options standard

SPRINGS			
	Adj. press. range bar (psi)	Pressure increase bar/turn (psi/turn)	Std. setting bar (psi) (reduc mode)
<b>03</b>	5-30 (75-435)	4.5 (65)	20-25 (290-3609)
<b>06</b>	10-60 (145-870)	8 (116)	40-45 (580-650)

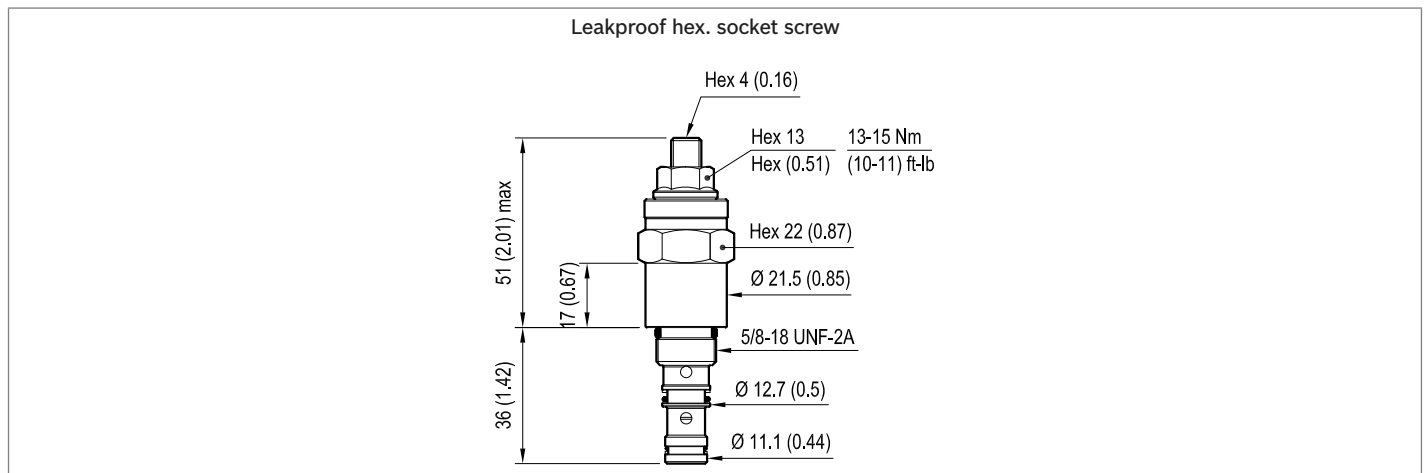
**Note:** Special settings available. Contact factory authorized representative for ordering code.

**Preferred types**

Type	Material number
049509919903000	R930006724
049509919906000	R930006725

Type	Material number

**Dimensions**



**Bosch Rexroth Oil Control S.p.A.**

Via Leonardo da Vinci 5  
P.O. Box no. 5  
41015 Nonantola – Modena, Italy  
Tel. +39 059 887 611  
Fax +39 059 547 848  
compact-hydraulics-cv@boschrexroth.com  
www.boschrexroth.com/compacthydraulics

© This document, as well as the data, specifications and other information set forth in it, are the exclusive property of Bosch Rexroth Oil Control S.p.a.. It may not be reproduced or given to third parties without its consent. The data specified above only serve to describe the product. No statements concerning a certain condition or suitability for a certain application can be derived from our information. The information given does not release the user from the obligation of own judgment and verification. It must be remembered that our products are subject to a natural process of wear and aging. Subject to change.