

Pressure reducing and relieving,
direct acting spool type
Common cavity, Size 10

VRPR-10A

04.95.04 - X - 85 - Z

RE 18318-53

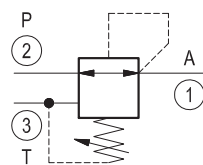
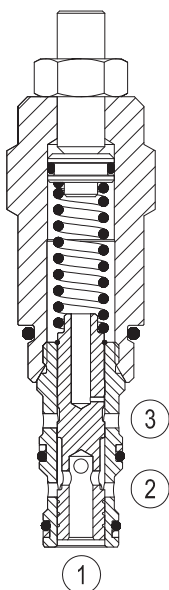
Edition: 03.2016

Replaces: 07.2015



Description

Initially, flow passes freely from 2 to 1. When the pressure at 1 exceeds the pressure setting, the valve acts to restrict input flow at 2. This increases the pressure drop through the valve and maintains consistent pressure at 1. The spring chamber is drained at 3 to prevent a build-up of back-pressure against the spool. Additionally, if pressure at 1 rises above the pressure setting, flow is relieved to 3 until the setting is re-attained.

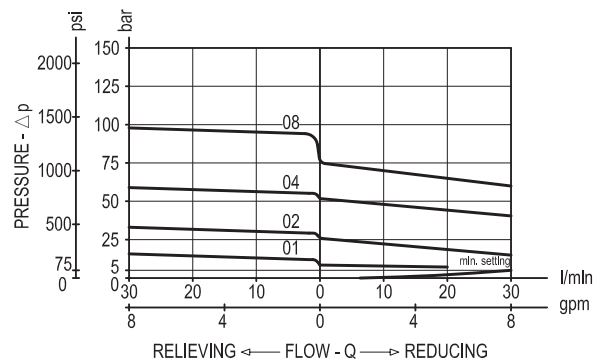


Technical data

Max. operating pressure port 2 (P)	350 bar (5000 psi) 210 bar (3000 psi) for version Z=01
Max. pressure admitted port 1 (A)	105 bar (1500 psi)
Max. flow	30 l/min (8 gpm)
Max. internal leakage ¹⁾	50 cm ³ /min. (3 cu.in./min.)
Fluid temperature range	-30 to 100 °C (-22 to 212 °F)
Installation torque	41 - 47 Nm (30 - 35 ft-lbs)
Weight ²⁾	0.26 kg (0.57 lbs)
Cavity	CA-10A-3N (see data sheet 18325-70)
Lines bodies and standard assemblies	Please refer to section "Hydraulic integrated circuit" or consult factory
MTTFd	150 years see data sheet 18350-51
Seal kit ³⁾	Code: RG10A3010520100 material no: R901111369
Fluids	Mineral-based or synthetics with lubricating properties at viscosities of 10 to 500 mm ² /s (cSt)
Recommended degree of fluid contamination	Nominal value max. 10µm (NAS 8) / ISO 4406 19/17/14
Installation position	No restrictions
Other Technical Data	See data sheet 18350-50

- 1) 1 - 3 to 80% of pressure setting
- 2) Standard version X=03 type
- 3) Only external seals for 10 valves

Characteristic curve



Ordering code

04.95.04	X	85	Z	00	*
-----------------	----------	-----------	----------	-----------	----------

Pressure reducing and relieving,
direct acting spool type

Adjustments

- 03** Leakproof hex. socket screw
- 04** Handknob and locknut

85 Common cavity, Size 10

Series 0/A to L
unchanged performances and dimensions

Version and options standard

SPRINGS			
	Adj. press. range bar (psi)	Pressure increase bar/turn (psi/turn)	Std. setting bar (psi) (reduc mode)
01	2-14 (30-200)	2 (29)	8-10 (115-145)
02	2-25 (30-350)	3 (44)	7-10 (100-145)
04	10-50 (145-725)	7 (102)	35-40 (500-580)
08	28-80 (400-1160)	14 (203)	45-50 (650-725)

Note: Special settings available. Contact factory authorized representative for ordering code.

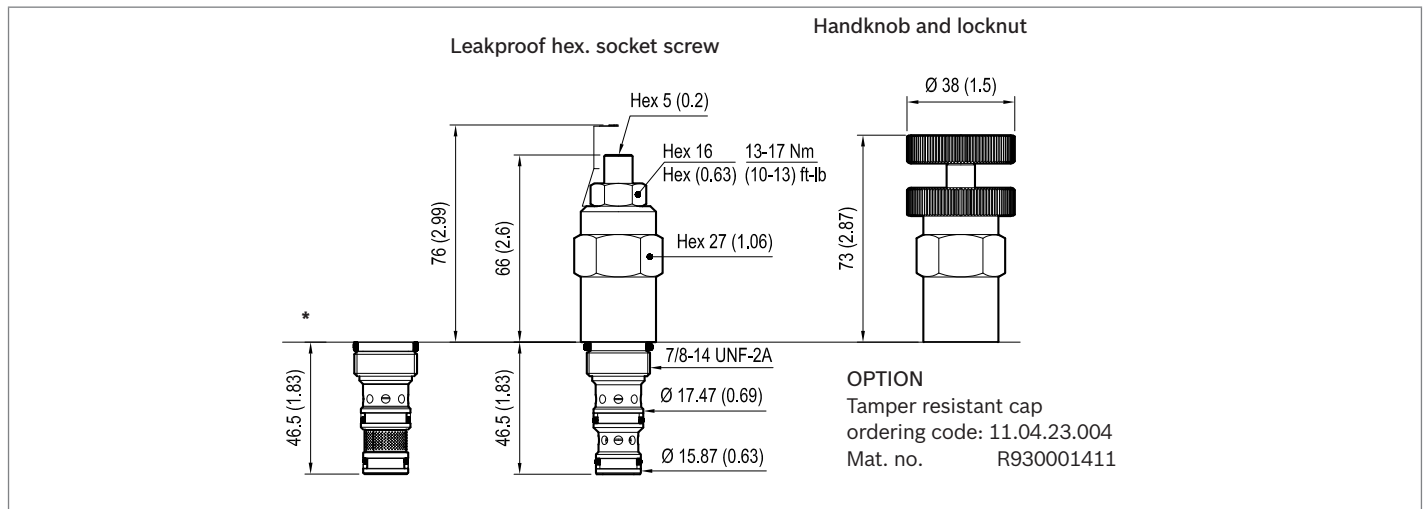
* Please contact factory in case of need of version with integrated filter.

Preferred types

Type	Material number
04950403850100A	R901104066
04950403850200A	R901109740
04950403850400A	R901102333
04950403850800A	R901109742

Type	Material number
049504048501000	R901109743
04950404850200A	R901109744
04950404850400A	R901109745
04950404850800A	R901109747

Dimensions



Bosch Rexroth Oil Control S.p.A.

Via Leonardo da Vinci 5
P.O. Box no. 5
41015 Nonantola – Modena, Italy
Tel. +39 059 887 611
Fax +39 059 547 848
compact-hydraulics-cv@boschrexroth.com
www.boschrexroth.com/compacthydraulics

© This document, as well as the data, specifications and other information set forth in it, are the exclusive property of Bosch Rexroth Oil Control S.p.a.. It may not be reproduced or given to third parties without its consent. The data specified above only serve to describe the product. No statements concerning a certain condition or suitability for a certain application can be derived from our information. The information given does not release the user from the obligation of own judgment and verification. It must be remembered that our products are subject to a natural process of wear and aging. Subject to change.