

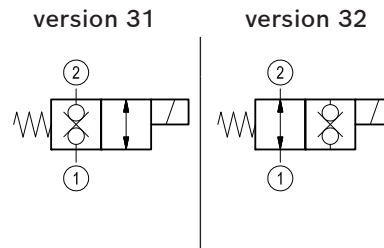
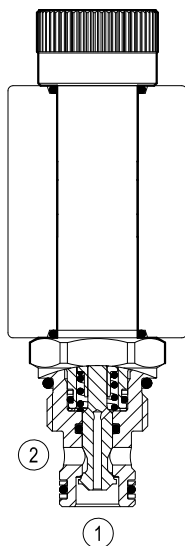
Solenoid operated valves direct acting poppet 2-way double lock

Hydac cavity interchange, 06020



VEDT-08F-A-16

OD.11 - X - 40 - Y - 00



General

Weight	kg (lbs)	0.22 (0.48)
Installation orientation		Optional
Ambient temperature range	°C (°F)	-30 to 60 (-22 to 140)

Hydraulic

Max. operating pressure	bar (psi)	250 (3600)
Max. flow	l/min. (gpm)	25 (7)
Max. internal leakage	drops/min.	20
Fluid temperature range	°C (°F)	-20 to 80 (-4 to 176)
Response time	ms.	40-60 at nominal flow (oil at 46 cSt)
Fluids		Mineral-based or synthetics with lubricating properties at viscosities of 20 to 380 mm ² /s (cSt)
Installation torque	Nm (ft-lbs)	34-41 (25-30)
Recommended degree of fluid contamination		Nominal value max. 10µm (NAS 8) ISO 4406 19/17/14
Special cavity		Hydac 06020
Lines bodies and standard assemblies		Please refer to section "Hydraulic integrated circuit" or consult factory
Seal kit	code material no.	RG40E201053010 R934003587
Seal kit coil	code material no.	RG16A1PMVQ0010 R934003962
Other technical data		See data sheet RE 18350-50

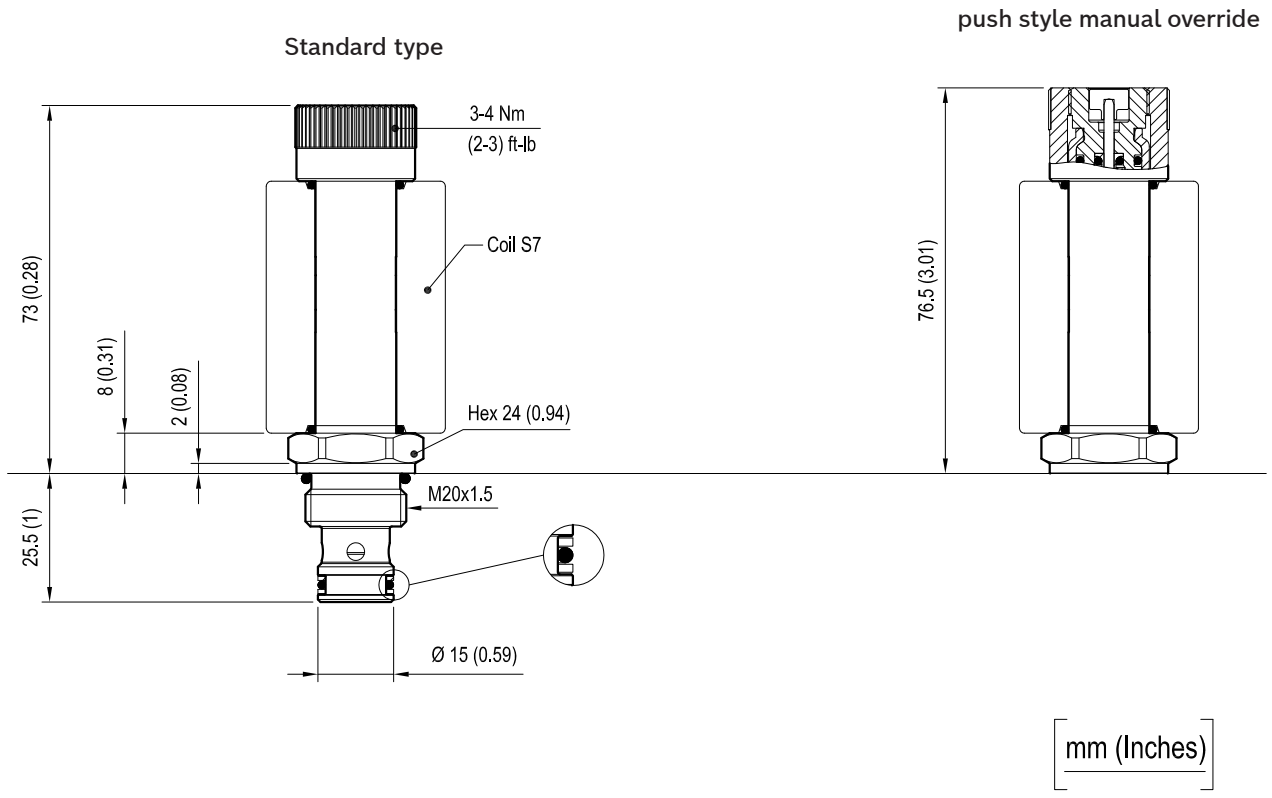
Electrical

Type of voltage		DC voltage
Coil type		S7
Supply voltage		See data sheet RE 18325-90
Power consumption	W	30
Duty cycle coil	%	See performance graphs
Type of protection		See data sheet RE 18325-90
Nominal voltage coil 30W		-10% +10%

Note: Coils must be ordered separately.

Dimensions

Solenoid operated valves poppet 2-way double lock - Special cavity

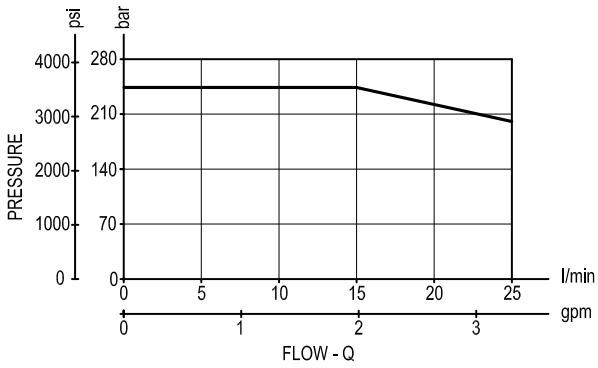


Performance graphs

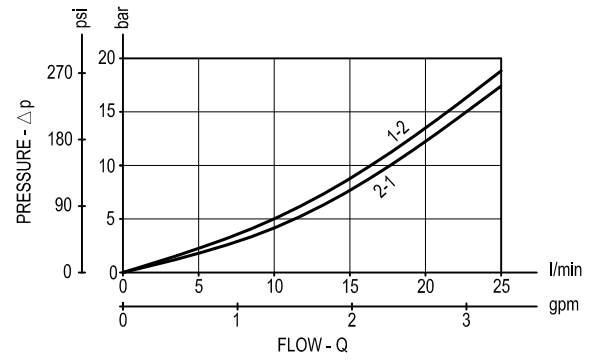
Performance limits

(Hot coil at nominal voltage)

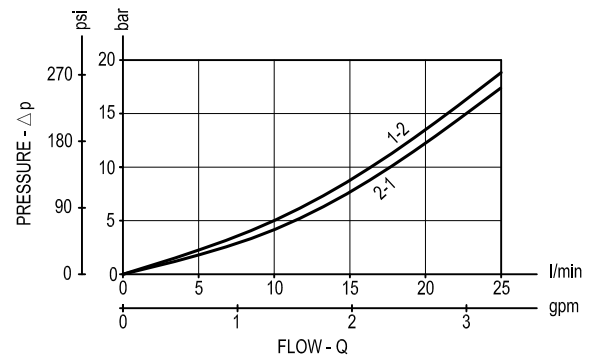
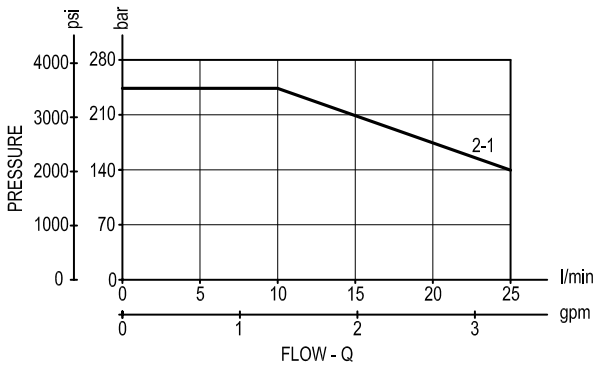
version 31 (NC)



Characteristic curves



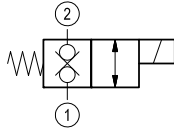
version 32 (NA)



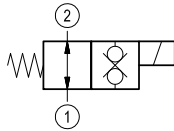
Ordering code

OD.11	*	40	*	00
-------	---	----	---	----

Solenoid operated valves
poppet 2-way double
lock normally closed and
normally open



= 31

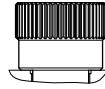


= 32

Special cavity: CA-08F-2N

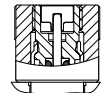
standard type

6A =



Push style manual override

6B =



Type	Material number
OD1131406A0000	R934003630
OD1131406B0000	R934003631
OD1132406A0000	R934003628
OD1132406B0000	R934003629

Type	Material number