

VALVES IN PHASE OUT
Valves replaced by new VEI-16 (RE18324-02)

RE 18324-01/01.16 1/4
Replaces: RE 18324-01/07.12

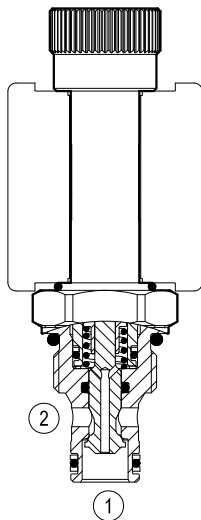
Solenoid operated valves direct acting poppet 2-way double lock normally closed

Common cavity, Size 08

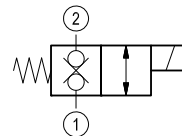


VEDT-08A-A-12.7-NC

OD.11.31.18 - Y - 00



Version 31



General

Weight	kg (lbs)	0.19 (0.42)
Installation orientation		Optional
Ambient temperature range	°C (°F)	-30 to 60 (-22 to 140)

Hydraulic

Max. operating pressure	bar (psi)	250 (3600)
Max. flow	l/min.(gpm)	15 (4)
Max. internal leakage	drops/min.	20
Fluid temperature range	°C (°F)	-20 to 80 (-4 to 176)
Response time	ms.	40-60 at nominal flow (oil at 46 cSt)

Fluids Mineral-based or synthetics with lubricating properties at viscosities of 20 to 380 mm²/s (cSt)

Installation torque Nm (ft-lbs) 34-41 (25-30)

Recommended degree of fluid contamination Nominal value max. 10µm (NAS 8) ISO 4406 19/17/14

Cavity CA-08A-2N see RE 18325-70

Lines bodies and standard assemblies Please refer to section "Hydraulic integrated circuit" or consult factory

Seal kit code material no. RG08A2010530100 R901101544

Seal kit coil code material no. RG12A1PNBR7010 R934003958

Other technical data See data sheet RE 18350-50

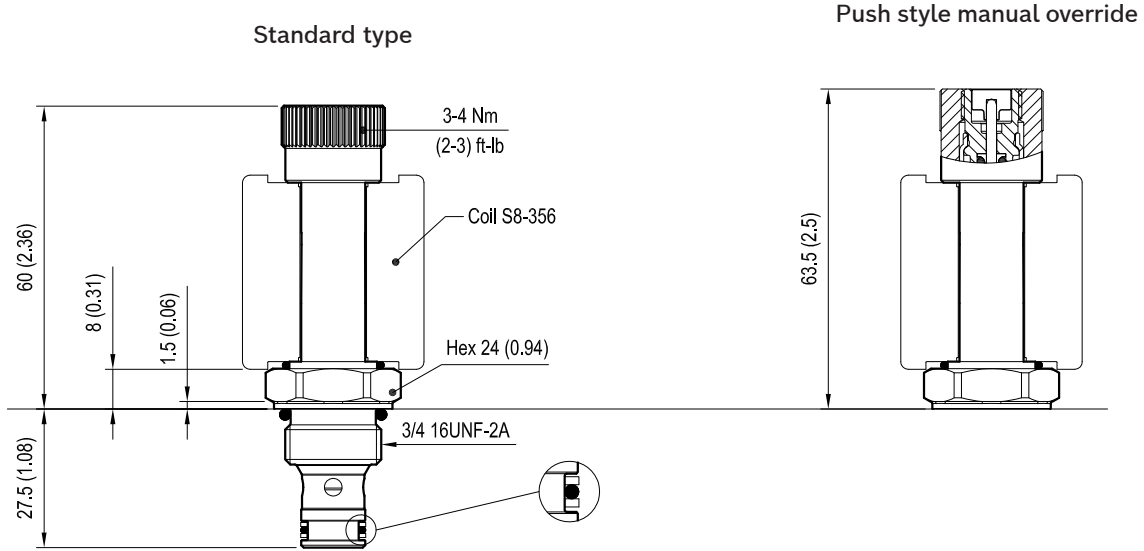
Electrical

Type of voltage	DC voltage
Coil type	S8-356
Supply voltage	See data sheet RE 18325-90
Nominal voltage	± 10%
Power consumption	W 20
Duty cycle coil	% See performance graphs
Type of protection	See data sheet RE 18325-90

Note: Coils must be ordered separately.

Dimensions

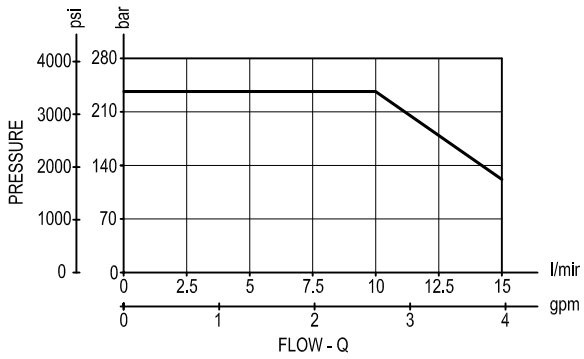
Solenoid operated valves poppet 2-way double lock normally closed



mm (Inches)

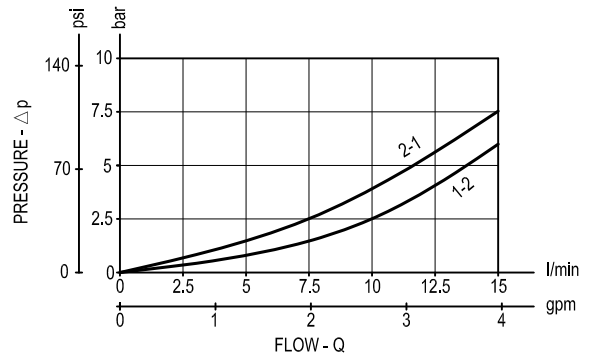
Performance graphs

Performance limits



version 31

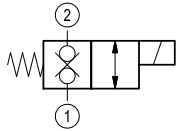
Characteristic curves



Ordering code

OD.11	*	18	*	00
-------	---	----	---	----

Solenoid operated valves
poppet 2-way double lock
normally closed

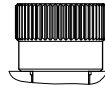


= 31

Common cavity: CA-08A-2N

standard type

2A =



Push style manual override

2B =



Type	Material number
OD1131182A0000	R934003626
OD1131182B0000	R934003627

Type	Material number