

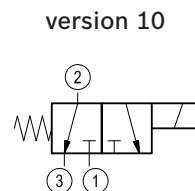
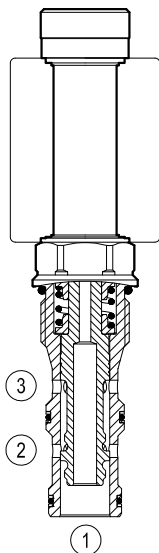
Solenoid operated valves direct acting spool 3-way 2-position

Common cavity, Size 12



VEDS-12A-32

OD.13 - X - 12 - Y - 00



General

Weight	kg (lbs)	0.39 (0.86)
Installation orientation		Optional
Ambient temperature range	°C (°F)	-30 to 60 (-22 to 140)

Hydraulic

Max. operating pressure	bar (psi)	315 (4500)
Max. operating pressure port 1	bar (psi)	210 (3000)
Max. flow	l/min.(gpm)	60 (16)
Max. internal leakage (*)	cm ³ /min. (cu.in/min.)	180 (11)
Fluid temperature range	°C (°F)	-20 to 80 (-4 to 176)

Fluids	Mineral-based or synthetics with lubricating properties at viscosities of 20 to 380 mm ² /s (cSt)	
Installation torque	Nm (ft-lbs)	81-87 (60-64)
Recommended degree of fluid contamination	Nominal value max. 10µm (NAS 8) ISO 4406 19/17/14	
MTTFD	150 years see 18350-51	
Cavity	CA-12A-3N see RE 18325-70	
Lines bodies and standard assemblies	Please refer to section "Hydraulic integrated circuit" or consult factory	
Seal kit	code material no.	RG12A3010520100 R930000941
Seal kit coil	code material no.	RG19A1PNBR7010 R934003964
Other technical data	See data sheet RE 18350-50	

(*) Measured at 210 bar (3000 psi) (oil at 46 cSt)

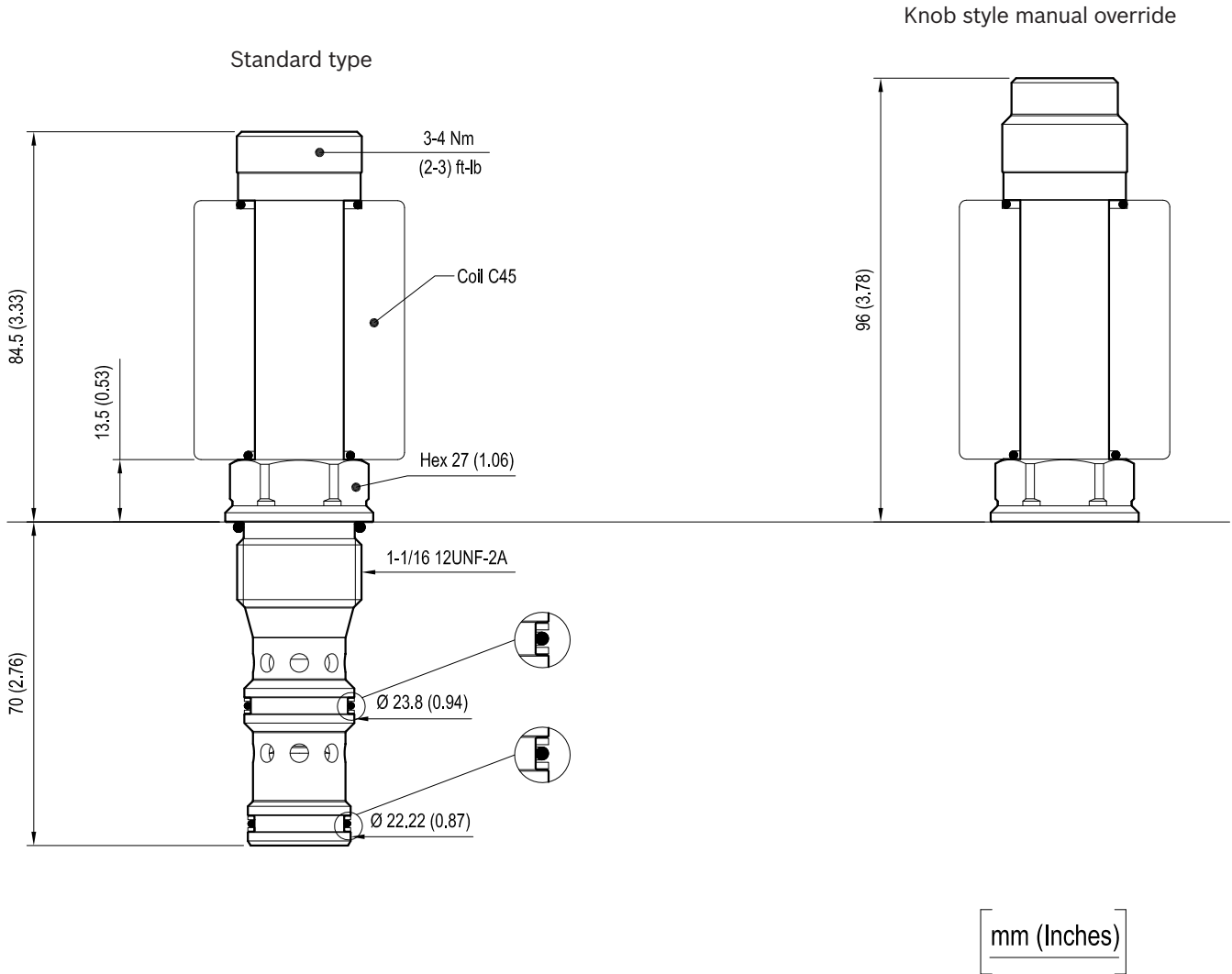
Electrical

Type of voltage	DC voltage
Coil type	C45
Supply voltage	See data sheet RE 18325-90
Power consumption	W 33
Duty cycle coil	% 100 see RE 18325-90
Type of protection	See data sheet RE 18325-90
Nominal voltage coil 33W	-10%+10%

Note: Coils must be ordered separately.

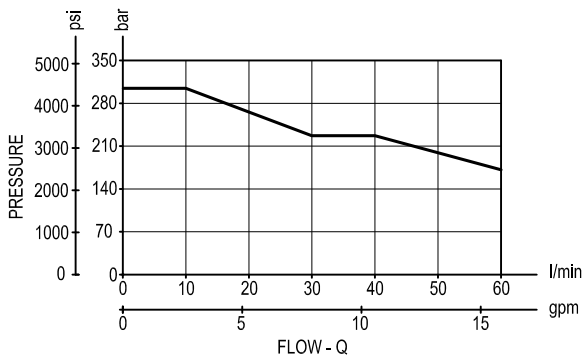
Dimensions

Solenoid operated valves direct acting spool 3-way 2-position

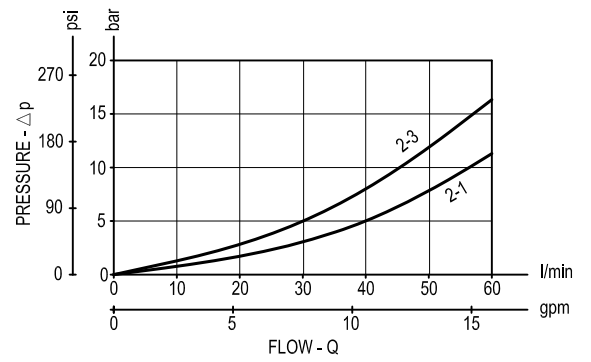


Performance graphs

Performance limits



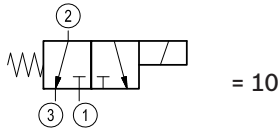
Characteristic curves



Ordering code

OD.13	*	12	*	00
-------	---	----	---	----

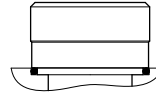
Solenoid operated valves
spool 3-way 2-position



Common cavity: CA-12A-3N

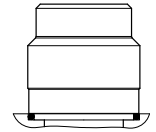
Standard type

1A =



Knob style manual override

1B =



Type	Material number
OD1310121A0000	R934003616
OD1310121B0000	R934003620

Type	Material number