



Portata max. **50 l/min**
 Max flow
 Pressione max. **250 bar**
 Max oper. pressure
 Attacchi **3/8" Gas-SAE6**
 Ports

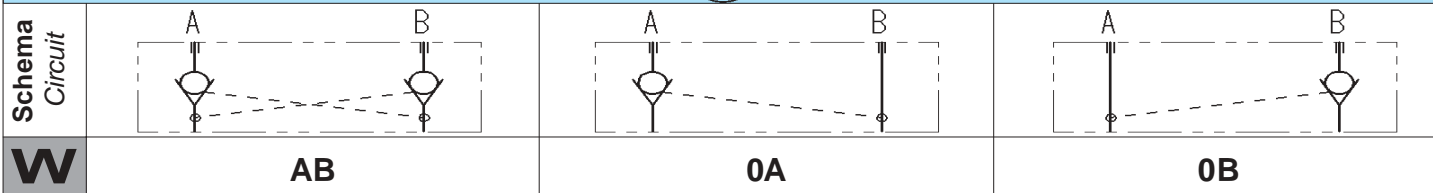
Codice **L 8 8 4 0 0 0 W X 0 0 Y Z**
 Code

Modello **EDM-VR**
 Model



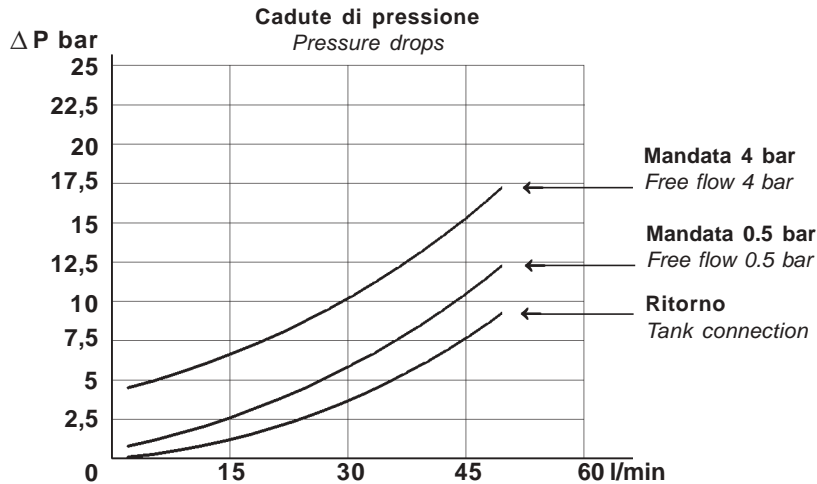
Descrizione: **Elementi modulari ED ritegno pilotato**
 Description: **Stacking modules ED pilot check**

SCHEMA (LC) CIRCUIT



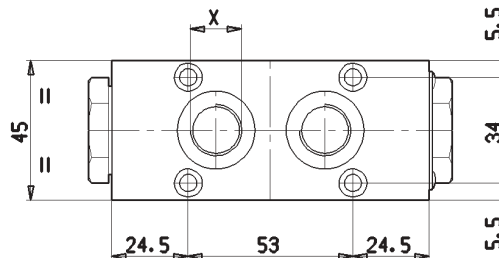
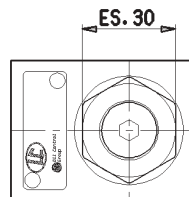
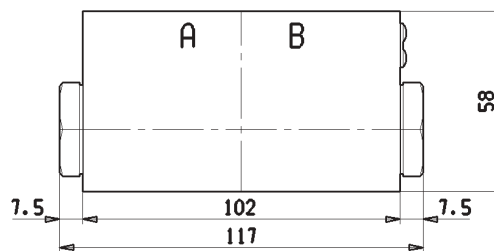
CARATTERISTICHE TECNICHE (LC) TECHNICAL FEATURES

X	Portata Massima Max flow l/min	Pressione Massima Max. operating pressure bar	Pressione di apertura Cracking pressure bar	<ul style="list-style-type: none"> - Rapporto di pilotaggio 4:1. - Corpo alluminio EN-AW 2011-T6, anodizzato. - Cartuccia VU6 in cavità n. LC15 (M24x1.5 d.18) - Pilot ratio 4:1. - Aluminium body EN-AW 2011-T6, anodized. - VU6 cartridge with cavity n. LC15 (M24x1.5 d.18)
01	50	250	0,5	
04	50	250	4	



DIMENSIONI DI INGOMBRO (LC) OVER-ALL DIMENSIONS

Y	Attacchi (X) Ports (X)
0	3/8" Gas
1	SAE6



Pesi Weights	0,83 kg
------------------------	---------

Z	VERSIONE VERSION
0	STANDARD STANDARD
V	GUARNIZIONI IN VITON SEALS IN VITON

MOMENTI DI SERRAGGIO (LC) TIGHTENING TORQUES

Cartuccia Cartridge ch. 30mm: 70+75 Nm	Elementi modulari Stacking modules N°4 DIN912-8.8 M5: 5+6 Nm	Raccordi sugli attacchi (X) Fittings on ports (X) 55+60 Nm
--	--	--