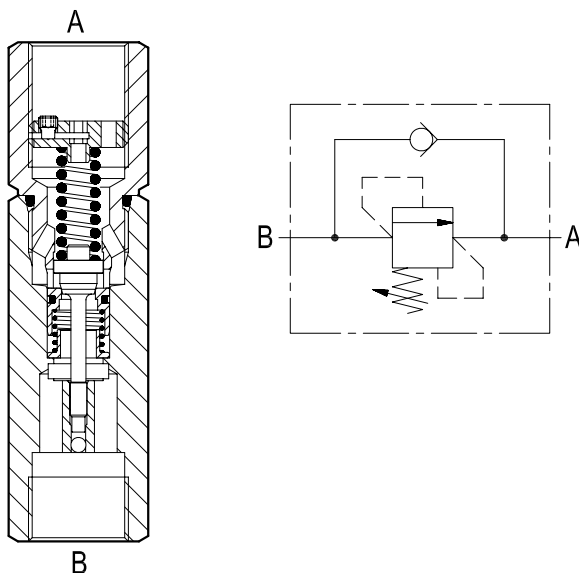


Sequence valves

Direct acting poppet type

VSQ-30-LM (G3/4)

05.21.16.00.04-Z

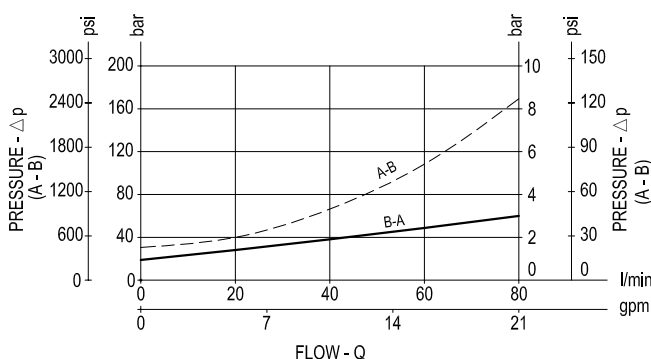


Description

They are composed by a relief valve (opening "B-A") with hydraulic dampening, and by a reverse flow annular check valve "A-B". Initially the flow goes to a first line connected in parallel to the B side, not shown here, and pressure increases until reaching the selected relief setting; then the relief valve opens and the second circuit is supplied out of A port, while the actuator connected to the B side remains pressurized. The incorporated check valve allows the reverse motion of the actuators which happens without specific control of the sequence, only depending from the load/pressure conditions.

Note that pressure at A needed to operate the second actuator is additive to the relief setting, and, for this reason, this valve is successfully employed to energize a secondary actuator which only requires low pressure.

Performance



Advantages

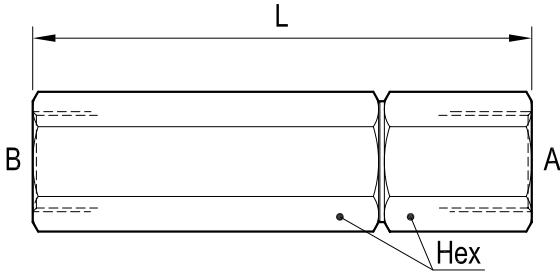
- Very compact design and inline mounting for space saving.
- Mounting position is unrestricted.
- Low Δp for B-A flow.
- Different springs available for different pressure ranges (see the "Z" table).

Technical data

Pressure P max bar (psi)	Flow Q max l/min (gpm)	Weight kg (lbs)
350 (5000)	80 (21)	0.6 (1.32)

Steel body, zinc plated

Dimensions



Port size / Dimensions

Ports A - B	L mm (inches)	Hex mm (inches)
G 3/4	132 (5.2)	32 (1.26)

Springs					
Z	Adj. press. range bar (psi)	Pres. increase bar/turn (psi/turn)	Std. setting bar (psi) Q=5 l/min	Ordering code	Colour
05	20-70 (290-1000)	21 (305)	20 (290)	03.51.01.106	green

The relief setting is adjustable by turning the internal ring nut: to turn the nut loosen first the little locking screw, then tighten it again after the adjustment. For the spring selection, refer to the table.

Applications

They are employed to control the sequence of two or more cylinders or motors, when the second actuator must be allowed to move only after the first actuator has performed a certain function. The incorporated check valve allows free reverse motion without specific control of the sequence.

Ordering code

05.21.16.00.04	Z
-----------------------	----------

Direct acting poppet type

Springs see table "Z"

Type	Material number	Type	Material number	Type	Material number
052116000405010	R930001447				