

Flow control, 2-way pressure compensated, fixed setting
with integrated relief pilot operated spool type
Special cavity, 019-E

VSRF-08S

04.08.01 - X - 19 - Z

RE 18321-32

Edition: 01.2019

Replaces: 04.2017



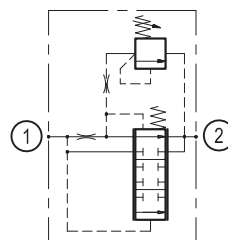
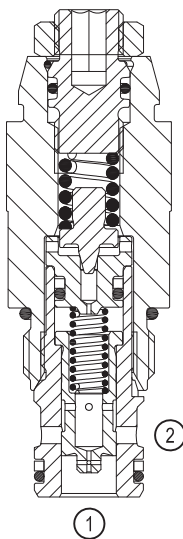
Technical data

Flow function	
Pressure min. - max.	25 - 420 bar (363 - 6090 psi)
Flow range	see "Regulated flow range" table
Relief function	
Max. pressure	420 bar (6090 psi)
Max. flow	20 l/min. (5.3 gpm)
Fluid temperature range	-30 to 100 °C (-22 to 212 °F)
Installation torque	40 - 45 Nm (30 - 33 ft-lbs)
Weight	0.15 kg (0.33 lbs)
Special cavity	019-E (see data sheet 18325-75)
Lines bodies and standard assemblies	Please refer to section "Hydraulic integrated circuit" or consult factory
Seal kit ¹⁾	Code: RG19E201052010 material no: R934003560
Fluids	Mineral-based or synthetics with lubricating properties at viscosities of 10 to 500 mm ² /s (cSt)
Recommended degree of fluid contamination	Nominal value max. 10µm (NAS 8) / ISO 4406 20/18/15
Installation	No restrictions
Other Technical Data	See data sheet 18350-50

1) Only external seals for 10 valves

Description

A constant flow rate, regardless of system pressures, is established from 1 to 2. The valve cannot be adjusted for variable flow output. Flow from 2 to 1 is limited by the diameter of the selected control orifice and is not pressure compensated. When pressure in 1 meets the setting of relief function, flow is allowed to tank through port 2. Pressure at port 2 is additive to the relief setting of the valve. VSRF-08S is a compact multifunction solution, able to replace in example LS relief and LS flow compensator in one single cartridge.



Ordering code

04.08.01	X	19	Z	00	*
-----------------	----------	-----------	----------	-----------	----------

Flow control, 2-way pressure compensated fixed setting with integrated relief pilot operated spool type

Series 0/A to L
unchanged performances and dimensions

Version and options standard

Regulated flow range l/min. (gpm) ± 15% at 25 bar	
0.4 (0.11)	04
0.7 (0.18)	07
1.2 (0.32)	12

	Adj. press. range bar (psi)	Press. increase bar (psi)	Std. setting bar (psi)
42	35-420 (508-6090)	228 (3306)	350 (5075)

19 Special cavity, 019-E

Preferred types

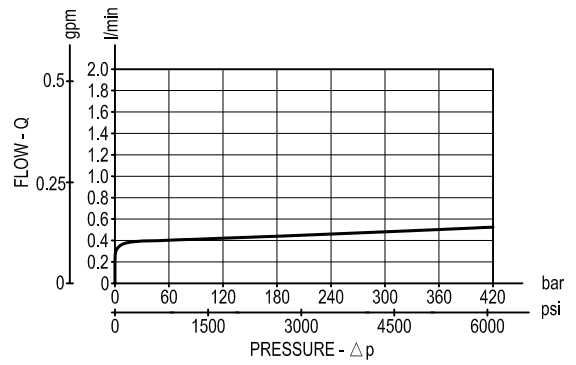
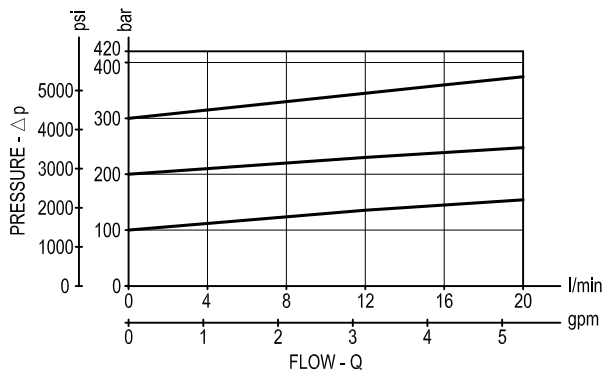
Type	Material number
040801041942000	R930065384
040801071942000	R930065385
040801121942000	R930065386

Type	Material number

Characteristic curves

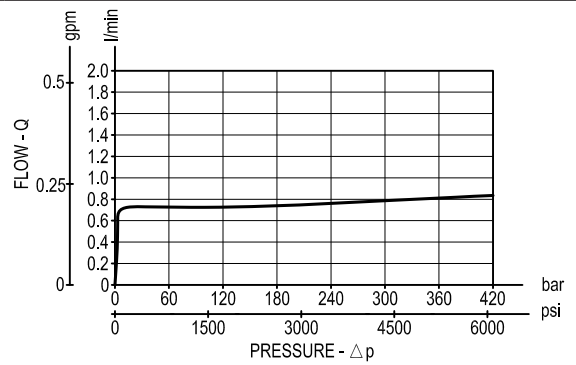
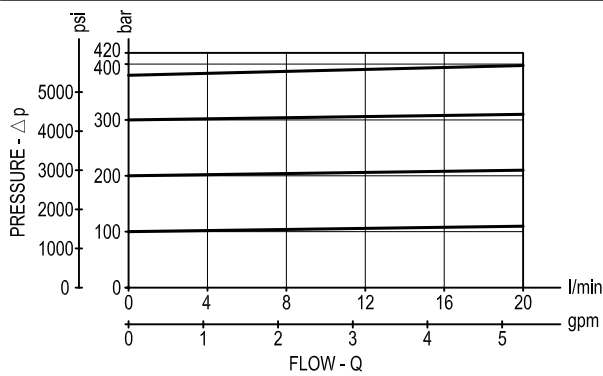
Version 04

Pressure drop



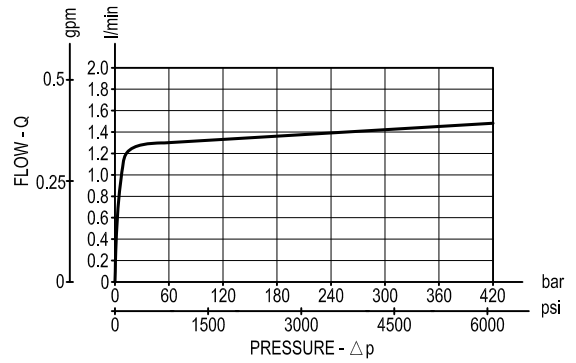
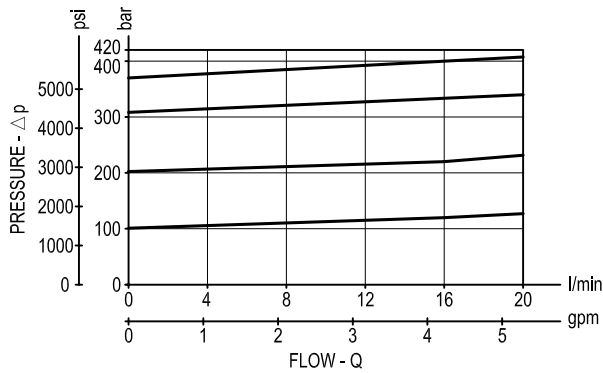
Version 07

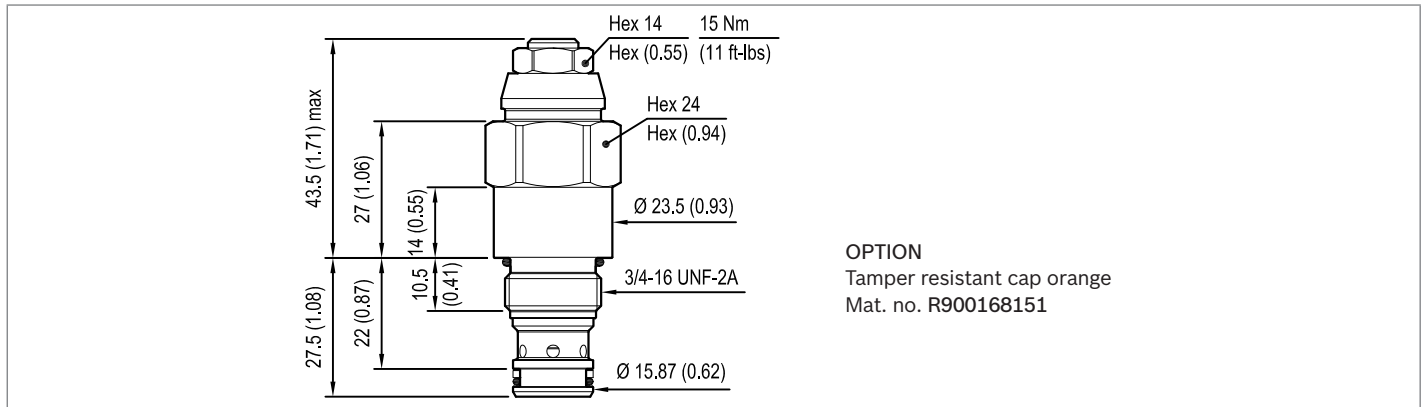
Pressure drop



Version 12

Pressure drop



Dimensions**Bosch Rexroth Oil Control S.p.A.**

Via Leonardo da Vinci 5
 P.O. Box no. 5
 41015 Nonantola – Modena, Italy
 Tel. +39 059 887 611
 Fax +39 059 547 848
 compact-hydraulics-cv@boschrexroth.com
 www.boschrexroth.com/compacthydraulics

© This document, as well as the data, specifications and other information set forth in it, are the exclusive property of Bosch Rexroth Oil Control S.p.a.. It may not be reproduced or given to third parties without its consent. The data specified above only serve to describe the product. No statements concerning a certain condition or suitability for a certain application can be derived from our information. The information given does not release the user from the obligation of own judgment and verification. It must be remembered that our products are subject to a natural process of wear and aging. Subject to change.